

SCREW-ON GROUND SLEEVE

Art. No.	Dimensions [mm]		EAN	Weight	Pallet	PU
	A	W				
19894071	71x71	150	4019346	kg		
19894071	71x71	150	515068	0.940	200	1
19894091	91x91	150	515075	1.060	200	1
19894101	101x101	150	515198	1.180	100	1

Surface: hot-dip galvanised



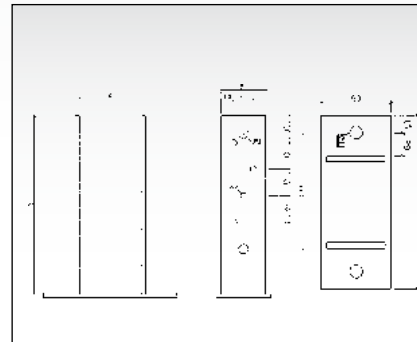
COLUMN BASE GROUP S – TYPE B ON CONCRETE

Art. No.	Dimensions [mm]			EAN	Weight	Pallet	PU
	A	W	C				
19874201	71	50x200	150x60	4019346	kg		
19874201	71	50x200	150x60	515013	1.200	320	10
19874202	81	50x200	160x60	515006	1.250	320	10
19874203	91	50x200	170x60	515020	1.300	320	10
19874204	101	50x200	180x60	515037	1.320	320	10
19874205	121	50x200	200x60	515044	1.370	320	10
19874206	141	50x200	220x60	515051	1.430	320	10

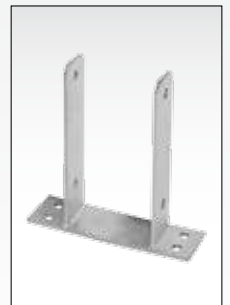
Surface: hot-dip galvanised

Fixing with:

TOP-FIX DUO screw (see page 109)



Hole pattern can vary



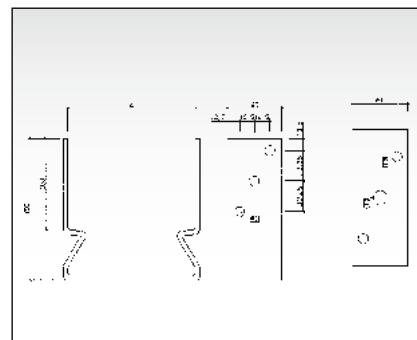
COLUMN BASE GROUP S – TYPE B ON CONCRETE WITH BEAD

Art. No.	Dimensions [mm]		EAN	Weight	Pallet	PU
	A	W				
19874071	71	60x150	4019346	kg		
19874071	71	60x150	516003	0.840	600	20
19874081	81	60x150	516010	0.860	600	20
19874091	91	60x150	516027	0.880	600	20
19874101	101	60x150	516034	0.910	600	20
19874121	121	60x150	516041	0.970	600	20

Surface: hot-dip galvanised

Fixing with:

TOP-FIX DUO screw (see page 109)



Hole pattern can vary

