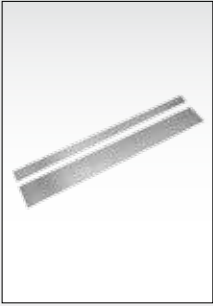


### NAILING STRAP TIES 2.0



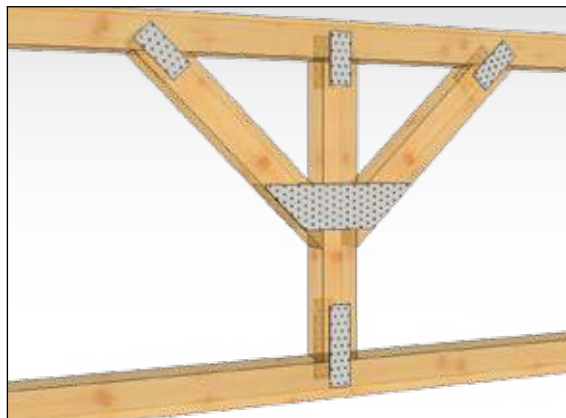
Art. No.	Dimensions [mm]					n <sup>1</sup> Ø 5	CE	EAN	Weight kg	Pallet	PU
	W	x	L	x	D						
101563	40	x	1200	x	2.0	120	0769	4019346	0.659	1200	20
101526	60	x	1200	x	2.0	180	EN14545	125007	0.988	780	20
101527	80	x	1200	x	2.0	240	EN14545	125014	1.318	600	20
101528	100	x	1200	x	2.0	300	EN14545	125021	1.647	420	10
101529	120	x	1200	x	2.0	360	EN14545	125038	1.977	360	10
101530	140	x	1200	x	2.0	420	EN14545	125045	2.306	300	10
101531	160	x	1200	x	2.0	480	EN14545	125052	2.636	300	10
101532	180	x	1200	x	2.0	540	EN14545	125069	2.965	200	10
101533	200	x	1200	x	2.0	600	EN14545	125076	3.295	200	5
101534	220	x	1200	x	2.0	660	EN14545	125083	3.624	150	5
101535	240	x	1200	x	2.0	720	EN14545	125090	3.954	150	5
101536	260	x	1200	x	2.0	780	EN14545	125106	4.283	100	5
101537	280	x	1200	x	2.0	840	EN14545	125113	4.613	100	5
101538	300	x	1200	x	2.0	900	EN14545	125120	4.942	100	5
101543	400	x	1200	x	2.0	1200	EN14545	125137	6.589	100	5
							EN14545	125182			

n<sup>1</sup> = number of holes, timber

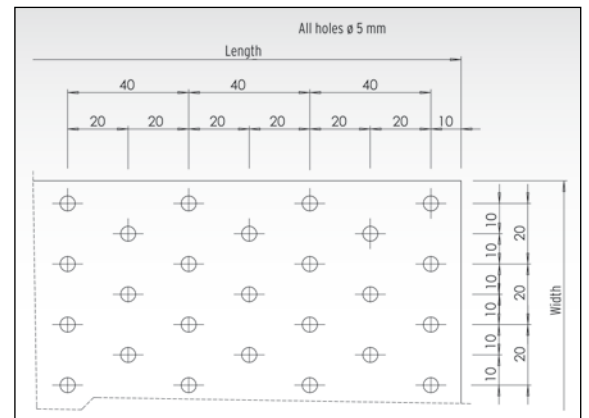
### NAILING STRAP TIES 2.5

Art. No.	Dimensions [mm]					n <sup>1</sup> Ø 5	CE	EAN	Weight kg	Pallet	PU
	W	x	L	x	D						
101564	40	x	1200	x	2.5	120	0769	4019346	0.824	1200	10
101544	60	x	1200	x	2.5	180	EN14545	125199	1.236	780	10
101545	80	x	1200	x	2.5	240	EN14545	125205	1.647	600	10
101546	100	x	1200	x	2.5	300	EN14545	125212	2.059	420	10
101547	120	x	1200	x	2.5	360	EN14545	125229	2.471	360	10
101548	140	x	1200	x	2.5	420	EN14545	125236	2.883	300	5
101549	160	x	1200	x	2.5	480	EN14545	125243	3.295	300	5
101550	180	x	1200	x	2.5	540	EN14545	125250	3.707	200	5
101551	200	x	1200	x	2.5	600	EN14545	125267	4.118	200	5
101552	220	x	1200	x	2.5	660	EN14545	125274	4.530	150	5
101553	240	x	1200	x	2.5	720	EN14545	125281	4.942	150	5
101554	260	x	1200	x	2.5	780	EN14545	125298	5.354	100	5
101555	280	x	1200	x	2.5	840	EN14545	125304	5.766	100	5
101556	300	x	1200	x	2.5	900	EN14545	125311	6.178	100	5
101561	400	x	1200	x	2.5	1200	EN14545	125328	8.237	100	5
							EN14545	125373			

n<sup>1</sup> = number of holes, timber



GH nailing strap ties are simple connectors for fixing narrow timber elements or for large surface connection and high stability.



Further dimensions and thicknesses available on request.

For fixing with GH connector nails (page 89), GH screws (page 90). Made of hot-dip galvanised steel sheet t = 2 or 2.5 mm.

